



Heat Activated Ceiling Panels

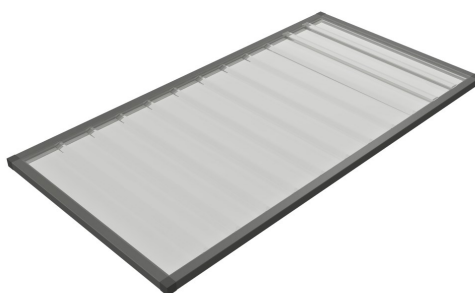
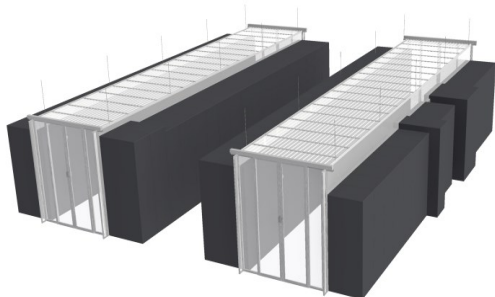
Standard Features

- Removable individual panels for easy access above the cabinets
- Heat activated design to shrink and drop away
- Sturdy aluminum frame
- Clear translucent panel
- Satin anodized finish
- Installation track and hardware
- Approved for use under fire suppression system

Custom Options

- Black anodize finish
- Custom powder coat finish
- Leveling kits for uneven cabinets

***Custom
designed and
built specific
to the
constraints
of the
installation***



Contact Info

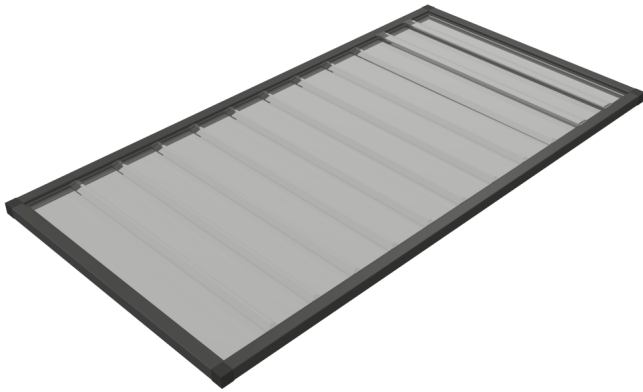
801.494.2098

435 W. Airport Rd Unit A5
Heber City, UT 84032

info@theWindChill.com
www.WindChillEngineering.com

Technical Data

Heat Activated Ceiling Panel



Standard Specifications *

Size and Finish	
Width	26"
Length	Up to 96"
Profile Width	1"
Standard Finish	Satin Anodize (Clear)
Upgrade Finish	Custom Anodize and Powder Coat Colors
Frame	
Material	6560 T-5 Temper Aluminum
Tensile Strength	30,000 psi
Paneling	
Material	15 mil Clear Polyvinyl Chloride
Color	clear
Smoke Deviation ASTM E84	125 Test Result
Flame Spread ASTM E84	15 Test Result
Meets or exceeds ASTM E84	
UL-R4036 and FM-4651 rated for use under fire suppression system	

* Custom sizes available upon request

