



Double Pivot Door

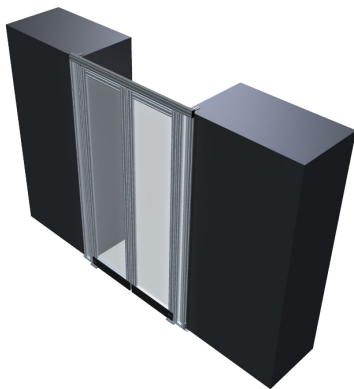
Standard Features

- Custom width for precise fit to most any opening
- Double acting spring with adjustable tension
- Sturdy aluminum frame
- Doors hold open at 85°
- Fire rated clear paneling
- Tight tolerances

Custom Options

- Solid bottom panel
- Cart bar
- Custom colors
- Aluminum handles
- Custom logo

***Custom
designed and
built specific
to the
constraints
of the
installation***



Contact Info

801.494.2098

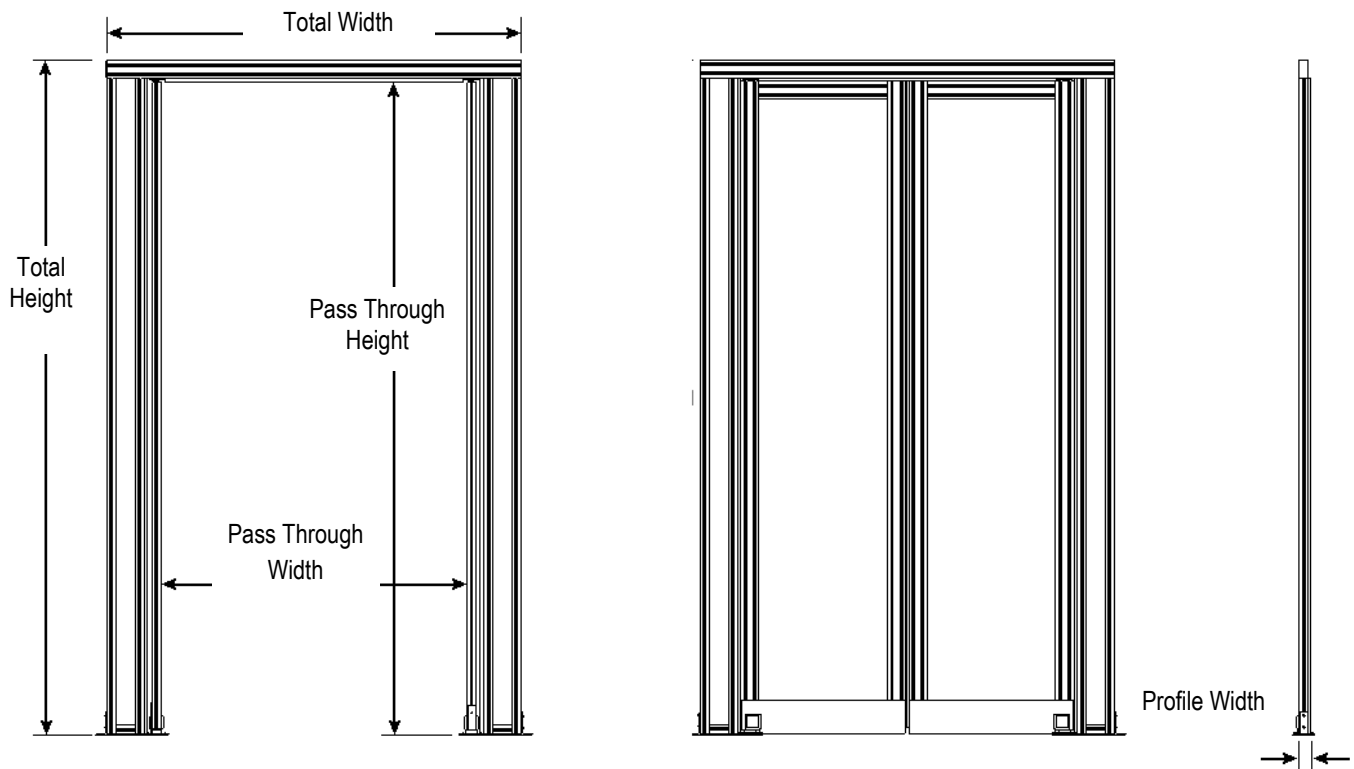
435 W. Airport Rd Unit A5
Heber City, UT 84032

info@theWindChill.com
www.WindChillEngineering.com

Technical Data: Double Pivot Door

Standard Specifications *

Size and Finish		Door & Frame	
Fits Aisle openings	48" to 90"	Material	6560 T-6 Temper Aluminum
Total Height	Up to 98"	Tensile Strength	30,000 psi
Pass Through Height	Up to 96 ⁷ / ₈ "	Lexan (High Optic Polycarbonate)	
Total Width	Up to 96"	Material	Polycarbonate
Pass Through Width	39 ⁷ / ₈ "	Color	Clear
Profile Width	1 ³ / ₁₆ "	Odor	Odorless
Standard Finish	Satin Anodize (Clear)	Thickness	4.5 mm
Upgrade Finish	Custom Anodize and Powder Coat Colors	Self-ignition Temp:	650°F
		Meets or exceeds ASTM E84	



Measuring for Rigid Containment

Measurements Needed for Rigid Doors

1. Aisle width (Distance from cabinet frame to cabinet frame or cabinet frame to wall)
2. Cabinet Height (finished cabinet height after being raised on levelers)

Typical Door Sizing

- Doors are typically built 1 ³/₁₆" taller than the cabinets, which allow the door to cap a hot or cold aisle ceiling system.
- Door side panels typically extend 2" to 8" past the cabinet opening (ex: For 48" aisle, the door width including side panels will be 56").
- Custom sized doors available upon request.