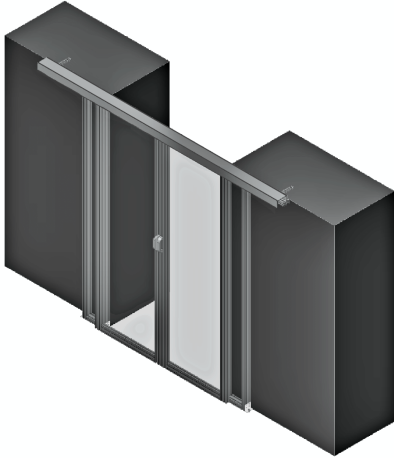
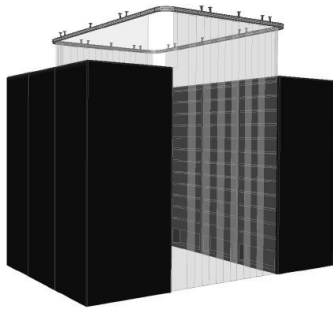


Rigid Doors and Rigid Walls



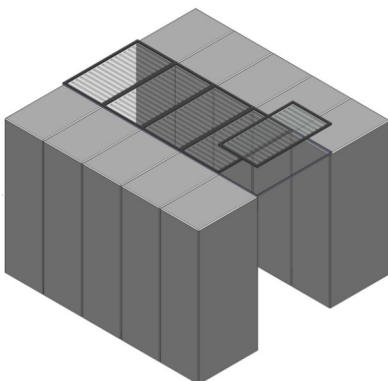
Frame	
Material	6063 T-6 Temper Aluminum
Tensile Strength	30,000 psi
Paneling - LuciteLux (Standard Paneling Material)	
Material	Acrylic sheet
Color	clear
Odor	Odorless
Self-ignition Temperature:	650°F
Meets or exceeds ASTM E84	
Paneling - Corrugated Hollow Plastic Sheet (Optional Paneling)	
Material	Polycarbonate based on Bisphenol A
Color	Clear
Odor	Odorless
Self-ignition temperature	450°C (842° F)
Meets or exceeds ASTM E84-01	
Thickness	1/4-inch

Strip Door / Curtains



Track	
Material	6063 T-6 Temper Aluminum
Fire Suppression Fusible Links	
Heat Activated	165°
Maximum Load	45 lbs
Minimum Load	3 lbs
Clear Vinyl	
NFPA 701 passed	

Shrink Away Panels



Frame	
Material	6063 T-6 Temper Aluminum
Tensil Strength	30,000 psi
Typical Panel Size	26" x 50"
Meets or exceeds ASTM E84 Standards	
Melt-Away Panel	
Material	15 Mil Clear Polyvinyl Chloride
Smoke Deviation ASTM E84	170 test result
Flame Spread ASTM E84	20 test result
Meets or exceeds ASTM E84 Standards	
UL rated for use under fire suppression systems	
FM Approved for use under fire suppression systems	

GapHOG / GapSTRIPS



Function: Adds durability as well as moisture, heat, UV, abrasion, puncture and chemical resistance to foam products used in severe conditions

Material	Vinyl Based
Tensile Strength - ASTM D-412	1010
Temperature Use Range	-0 °F to 200°F
Flammability	Listed UL 94 HBF
Elongation- ASTM D-412	340%
Block Resistance	4hr @ 160°F
Chemical Resistance - ASTM-D-1308	
Mineral Oil, Saline, Machine Oil, Blood, Urea (6% in H2O), Cleaner, Acid (10% sulfuric in H2O), Gasoline, Alcohol	Very Good
Butadiene (iodine)	Very Good (stained after 5 min.)
Density Nominal kg/m³	
ASTM D3574	93 (5.8)
Flammability – UL 94	Listed HBF
Thermal Conductivity-K Value	
ASTM C177 W/m*K (BTU in/hr ft ² F)	.040 (.28)
Compression Set (%) - ASTM D3574	
22 hr at 70C (158F) Compressed 25%	.6
Compressed 50%	2.4
Tensile Strength kPa (psi)	
ASTM D3574	
51 cm/min (20in/min) @22C (72F)	135
RoHS Compliant	Yes