



Auto Closing Single Sliding Door

Standard Features

- Custom width for precise fit to most any opening
- No threshold design
- Soft close auto closing door
- Sturdy aluminum frame
- Door latch to hold door open
- Fire rated clear paneling
- Tight tolerances

Custom Options

- Digital lock
- Custom colors
- Aluminum handles
- Custom logo
- Corrugated paneling

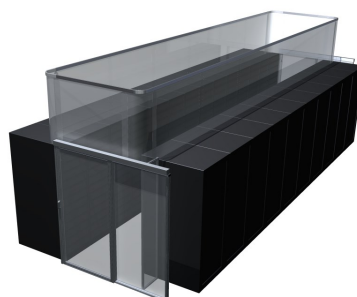
***Custom
designed and
built specific
to the
constraints
of the
installation***

Contact Info

801.494.2098

435 W. Airport Rd Unit A5
Heber City, UT 84032

info@theWindChill.com
www.WindChillEngineering.com



Technical Data

Single Sliding Door

With Auto Closer



Standard Specifications *

Size and Finish	
Fits Aisle openings	38" to 72"
Total Height	Up to 101 1/2"
Pass Through Height	Up to 98"
Total Width	Up to 80 1/8"
Pass Through Width	38 5/8"
Profile Width	3 11/16"
Standard Finish	Satin Anodize (Clear)
Upgrade Finish	Custom Anodize and Powder Coat Colors
Door & Frame	
Material	6560 T-6 Temper Aluminum
Tensile Strength	30,000 psi
Paneling - Lexan (High Optic Polycarbonate)	
Material	Polycarbonate
Color	Clear
Odor	Odorless
Thickness	4.5 mm
Self-ignition Temperature:	650 °F
Meets or exceeds ASTM E84	

* Custom sized doors available upon request

